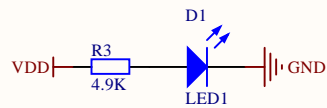
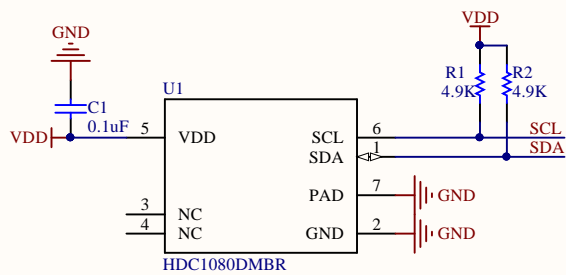
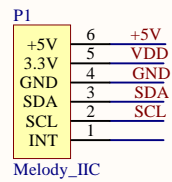


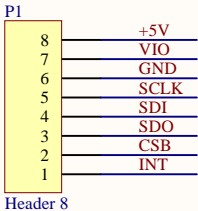
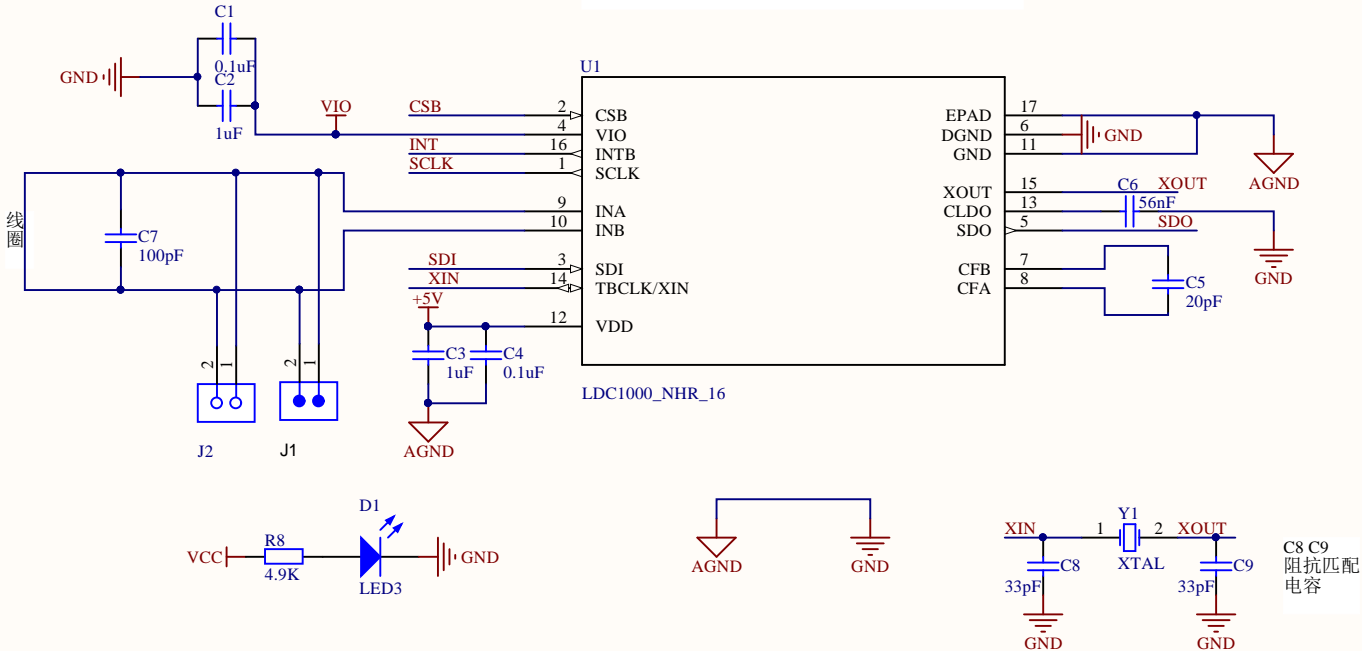
Title		
Size	Number	Revision
A4		
Date:	2016/11/22	Sheet of
File:	D:\SVN\...\LED.SchDoc	Drawn By:

HDC1080  
温湿度传感器--I2C



Title 温湿度传感器		
Size A4	Number	Revision
Date: 2016/11/22	Sheet of 1 of 1	
File: D:\SVN\...\HDC1080.SchDoc	Drawn By: carry	

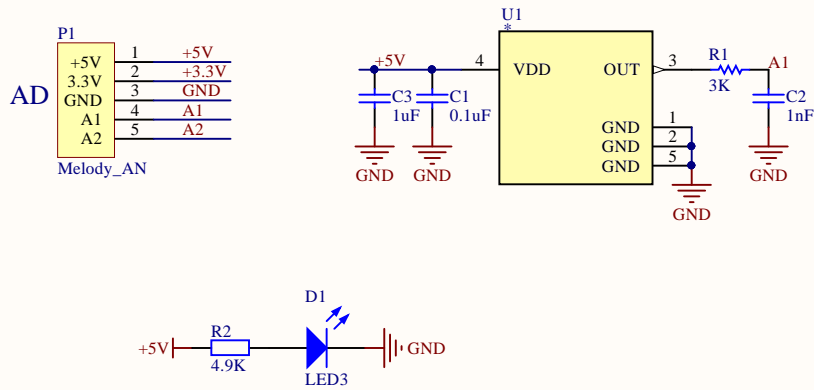
## LDC1000-SPI接口位移传感器



VIO : input 3.3V as digital IO supply  
SCLK : SPI CLK input  
SDI : SPI Slave data in  
SDO : SPI Slave data out  
CSB : Multiple drive can be connected on the same SPI bus and csb can be used to select the drive to be communicated with  
INT : connected to external LC tank

Title 位移传感器			
Size A4	Number		Revision
Date:	2016/11/22	Sheet of	1 of 1
File:	D:\SVN\...\LDC1000.SchDoc	Drawn By:	carry

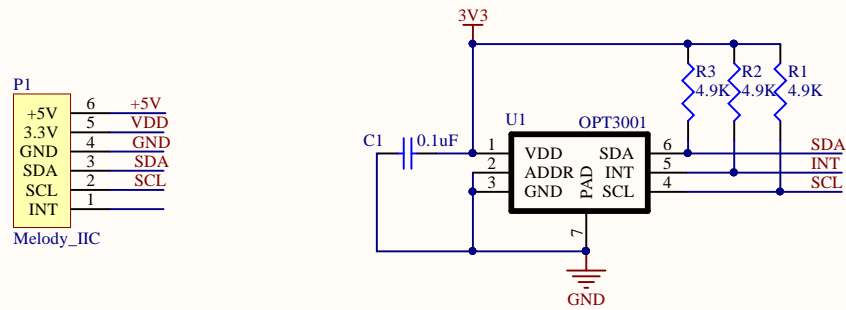
LMT84  
温度传感器--AD模拟



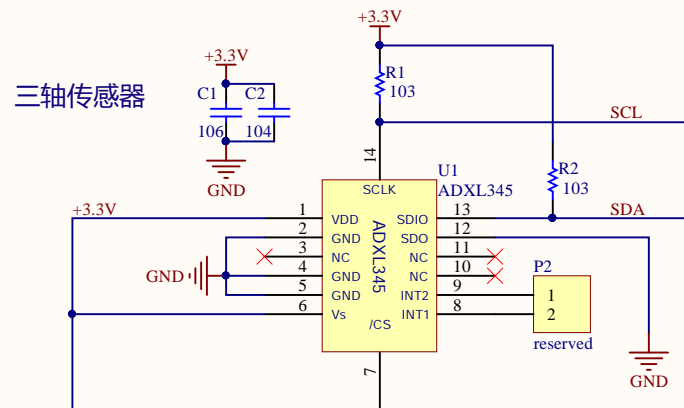
Title 温湿度传感器		
Size A4	Number	Revision
Date: 2016/11/22	Sheet of 1 of 1	
File: G:\AY-物联网\LMT84\LMT84.SchDoc	Drawn By: carry	



OPT3001  
环境光传感器--I2C

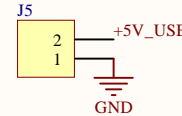
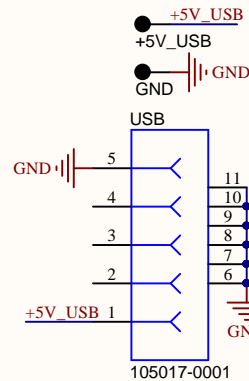
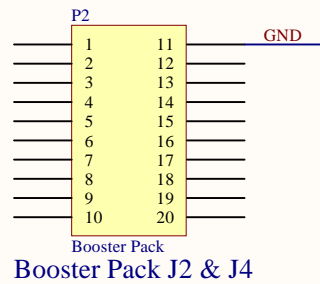
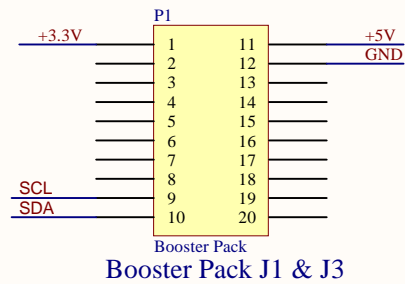
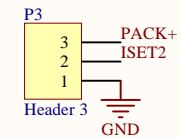
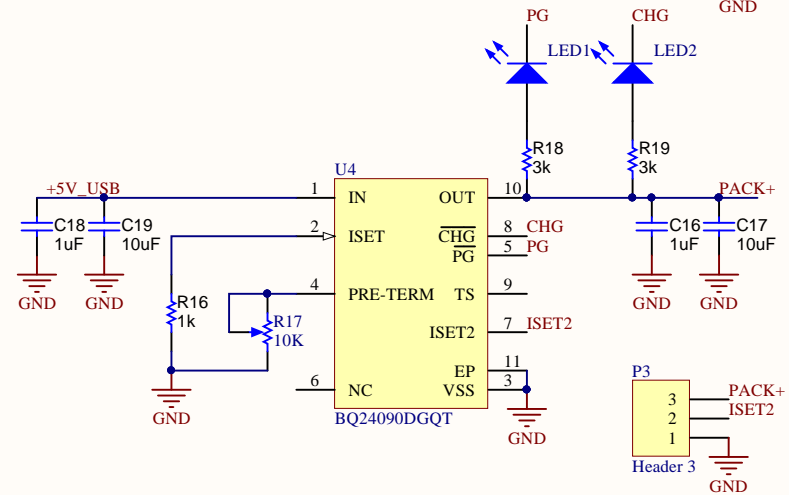
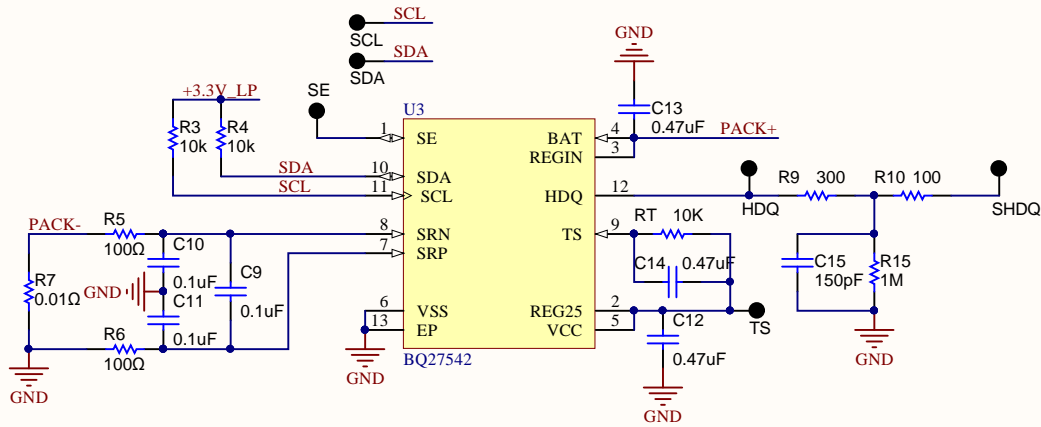
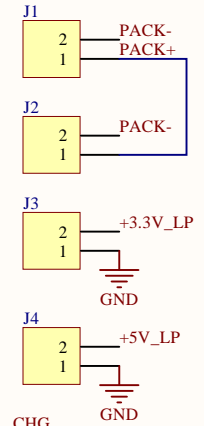
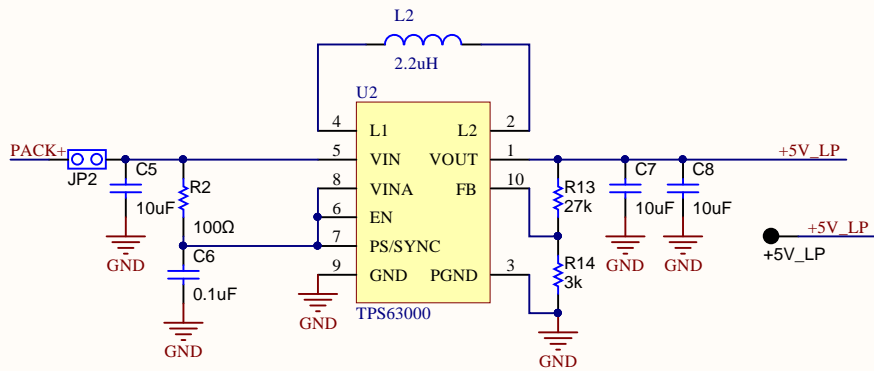
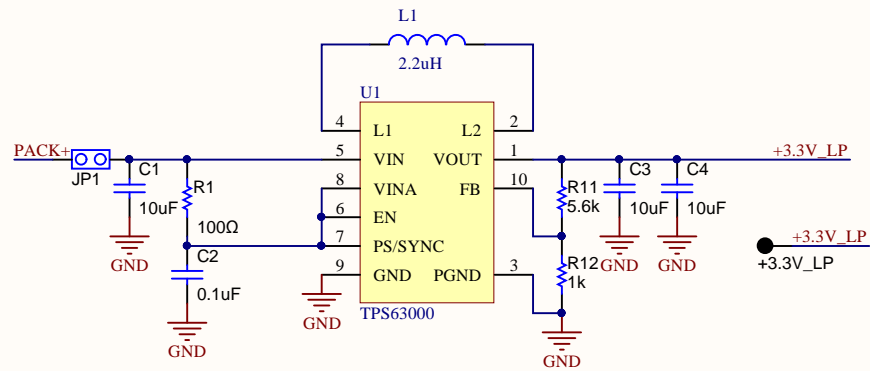


Title 温湿度传感器		
Size A4	Number	Revision
Date: 2016/11/22	Sheet of 1 of 1	
File: G:\AY-物联网\光感\光感.SchDoc	Drawn By: carry	

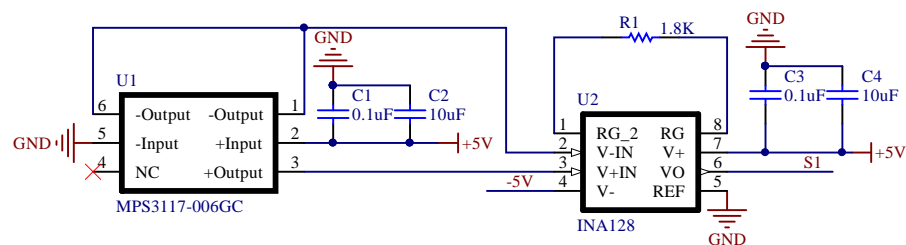


Melody\_IIC

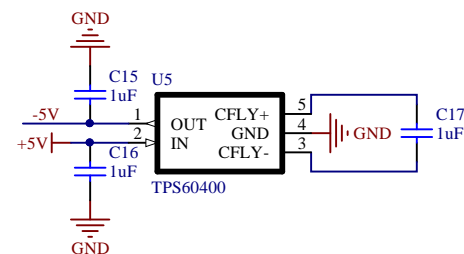




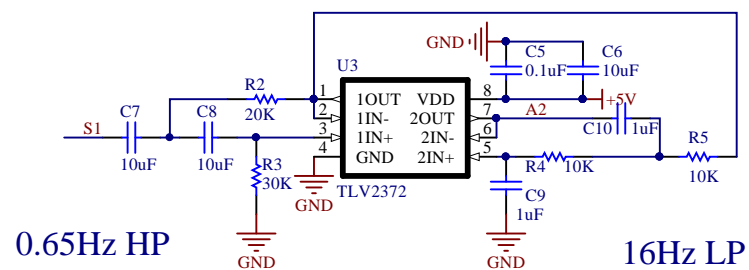
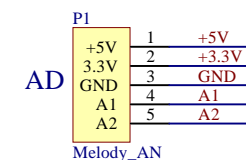
Title		
Size	Number	Revision
A4		
Date:	2016/11/22	Sheet of
File:	G:\AY-锂电池\Li-ion.SchDoc	Drawn By:



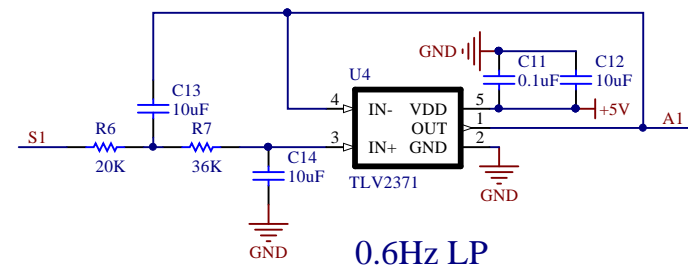
## 压力传感器和仪用运放



## 电源负压



## 带通滤波



## 袖套压力采样

Title		
Size A4	Number	Revision
Date:	2016/11/22	Sheet of
File:	D:\SVN\...\blood pressure.SchDoc	Drawn By: