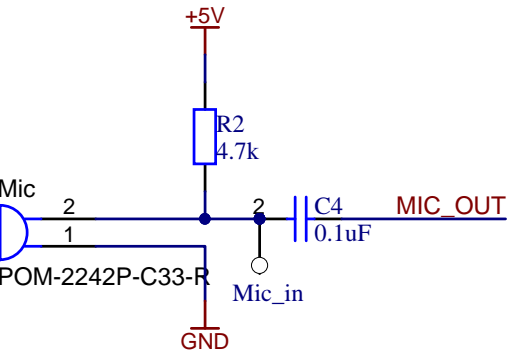




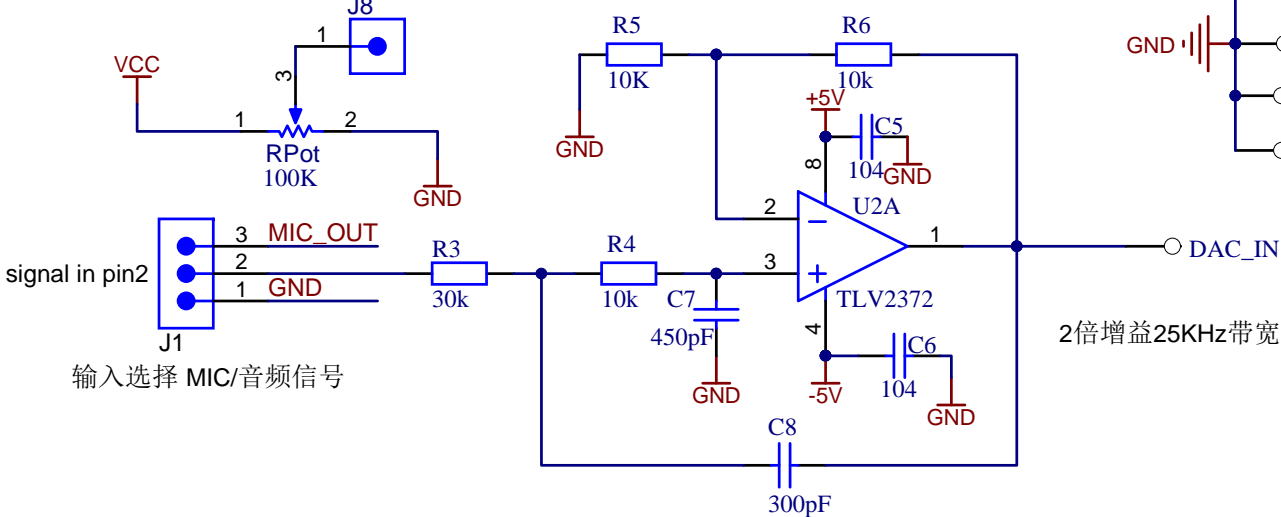
Title		
Size A4	Number	Revision
Date: File:	2013/12/16 E:\AllWork\..LCD-Tiva.SCHDOC	Sheet of Drawn By:

程控衰减放大和峰值检测模块

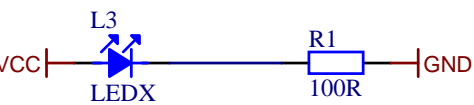
MIC输入信号产生



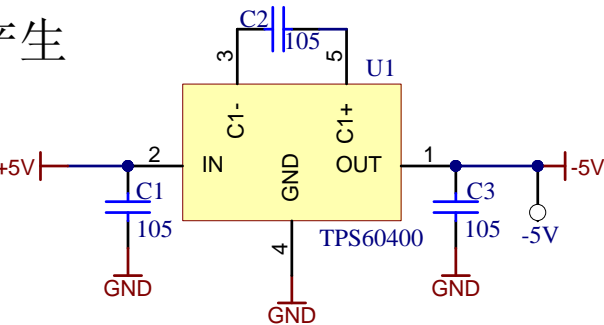
低通滤波和DAC驱动



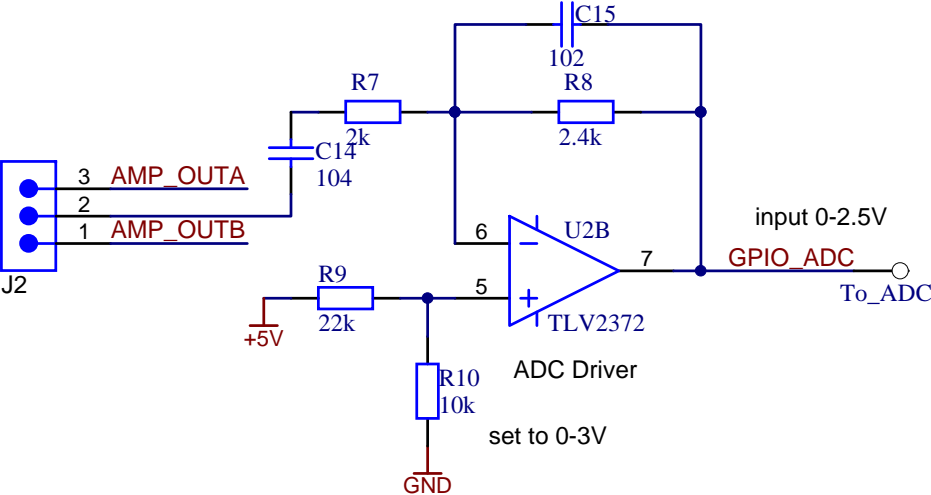
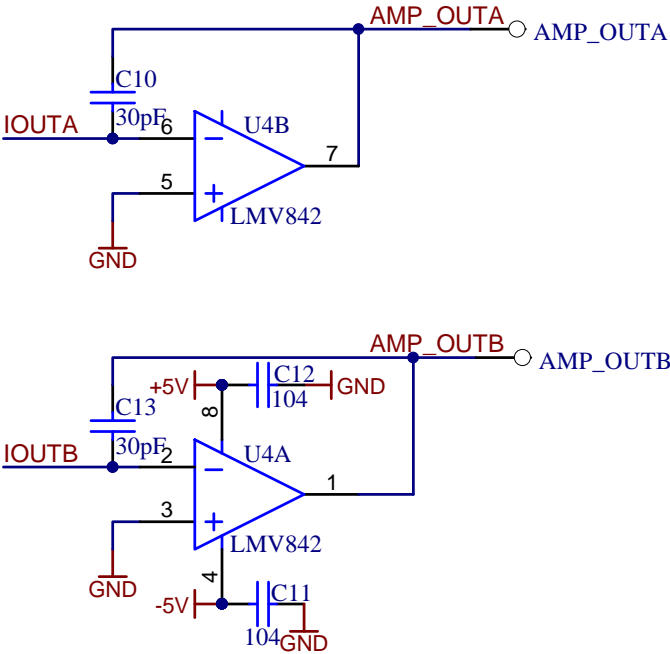
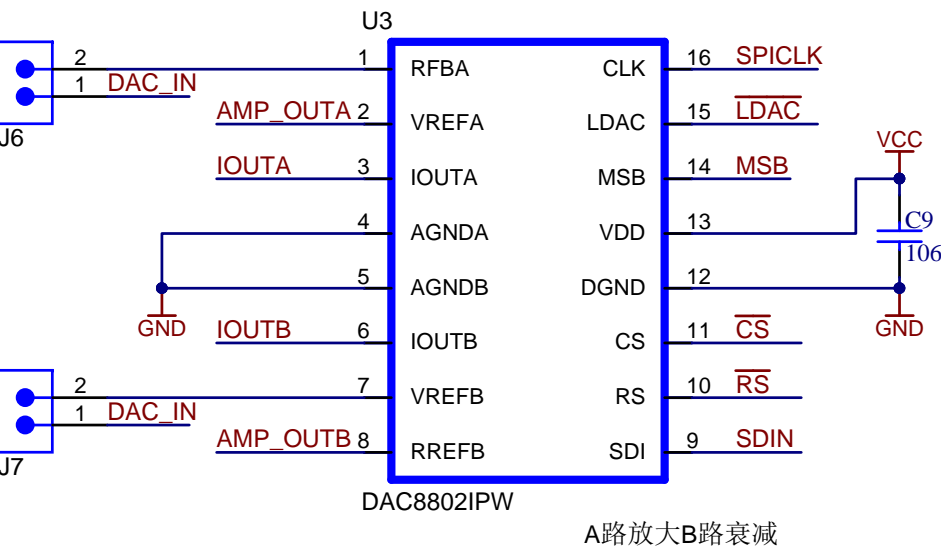
上电指示



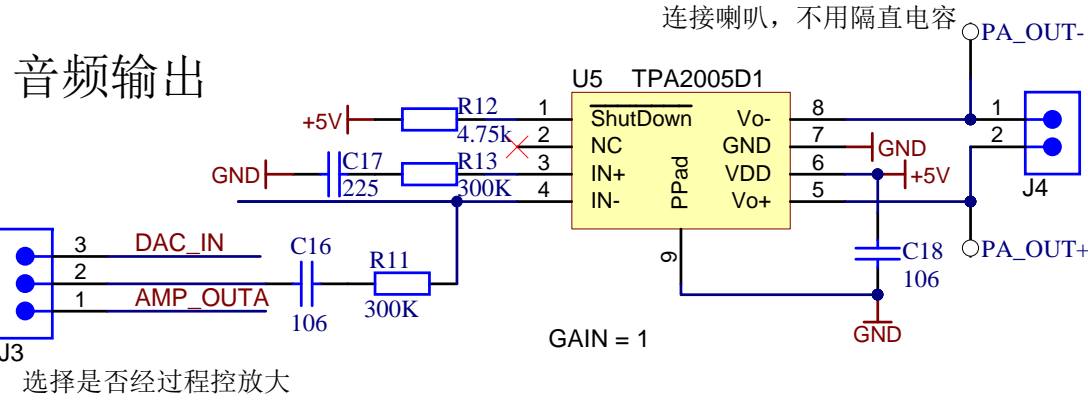
负电源产生



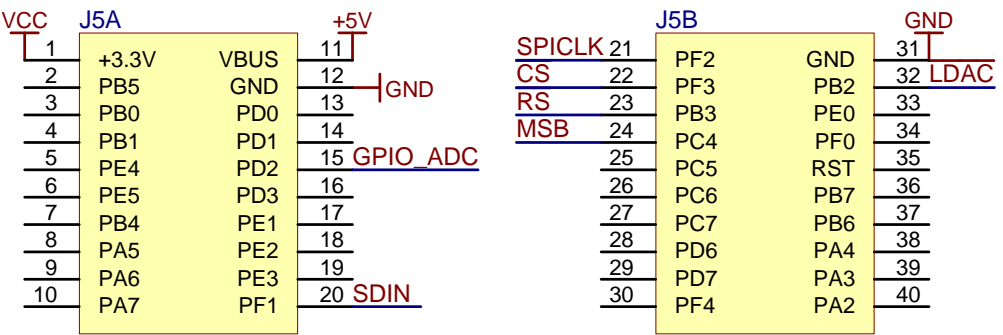
程控放大和衰减



音频输出



Boosterpack



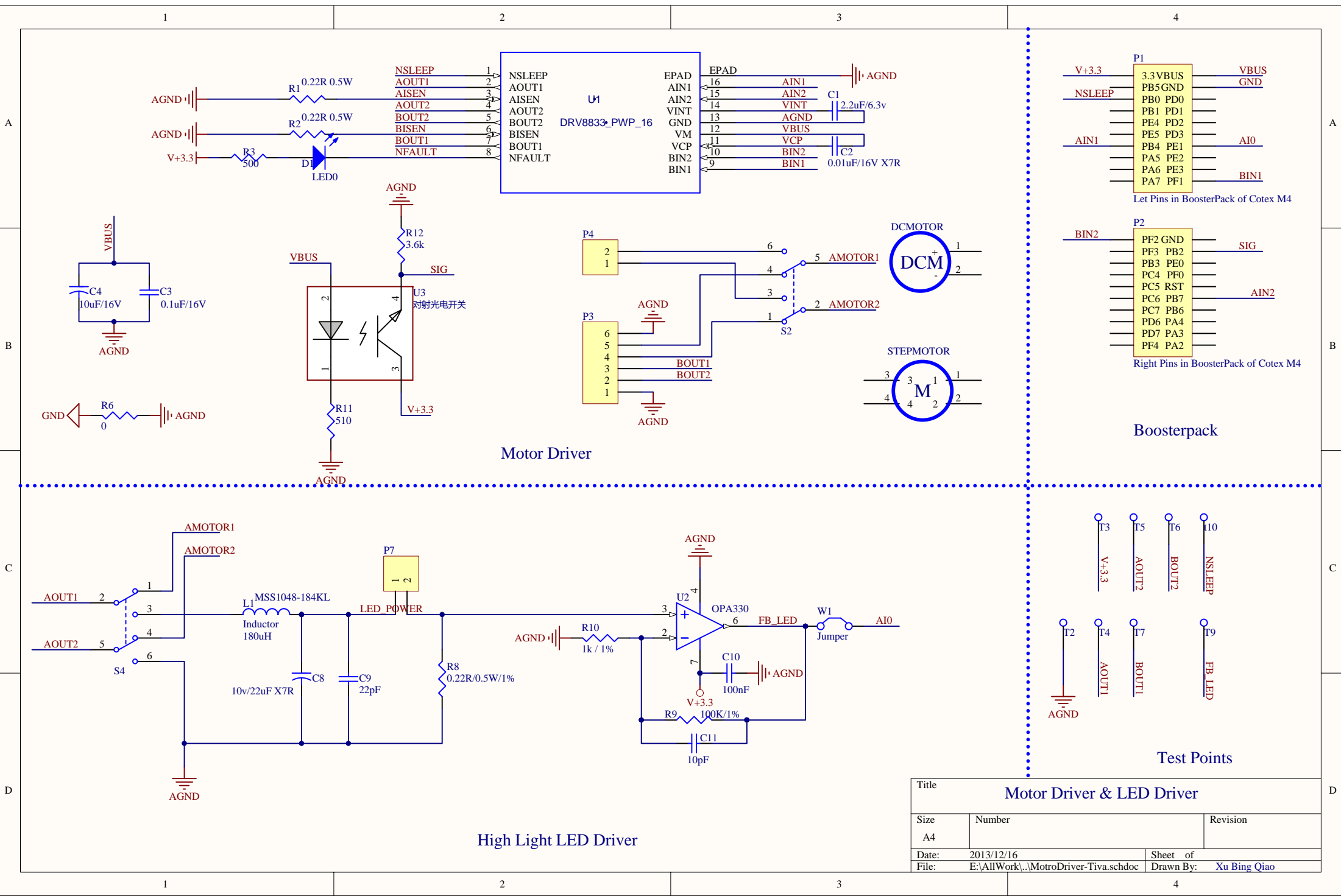
Texas Instruments and/or its licensors do not warrant the accuracy or completeness of this specification or any information contained therein. Texas Instruments and/or its licensors do not warrant that this design will meet the specifications, will be suitable for your application or fit for any particular purpose, or will operate in an implementation. Texas Instruments and/or its licensors do not warrant that the design is production worthy. You should completely validate and test your design implementation to confirm the system functionality for your application.

Number: PRJ_Number Rev: SCH_Sheet Title: Not in version control Drawn By: PRJ_Engineer

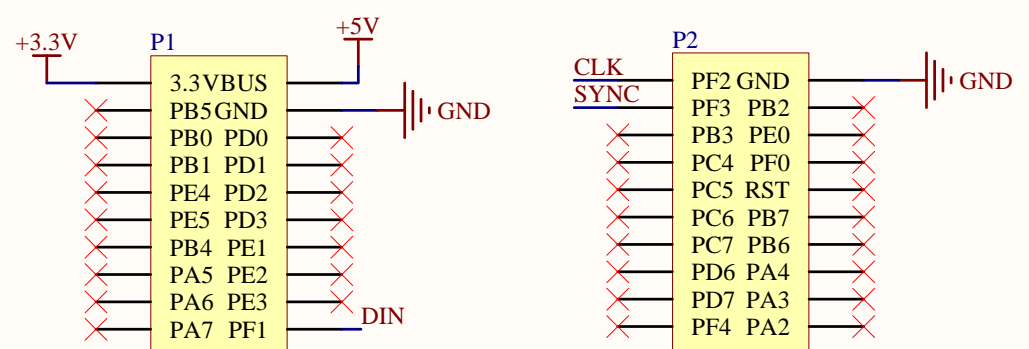
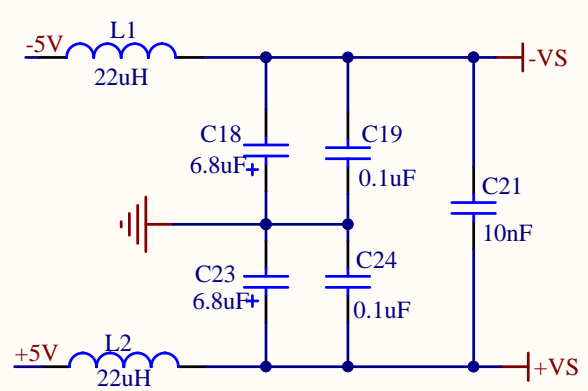
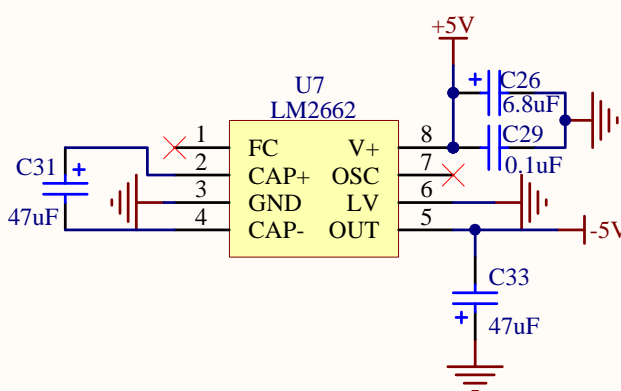
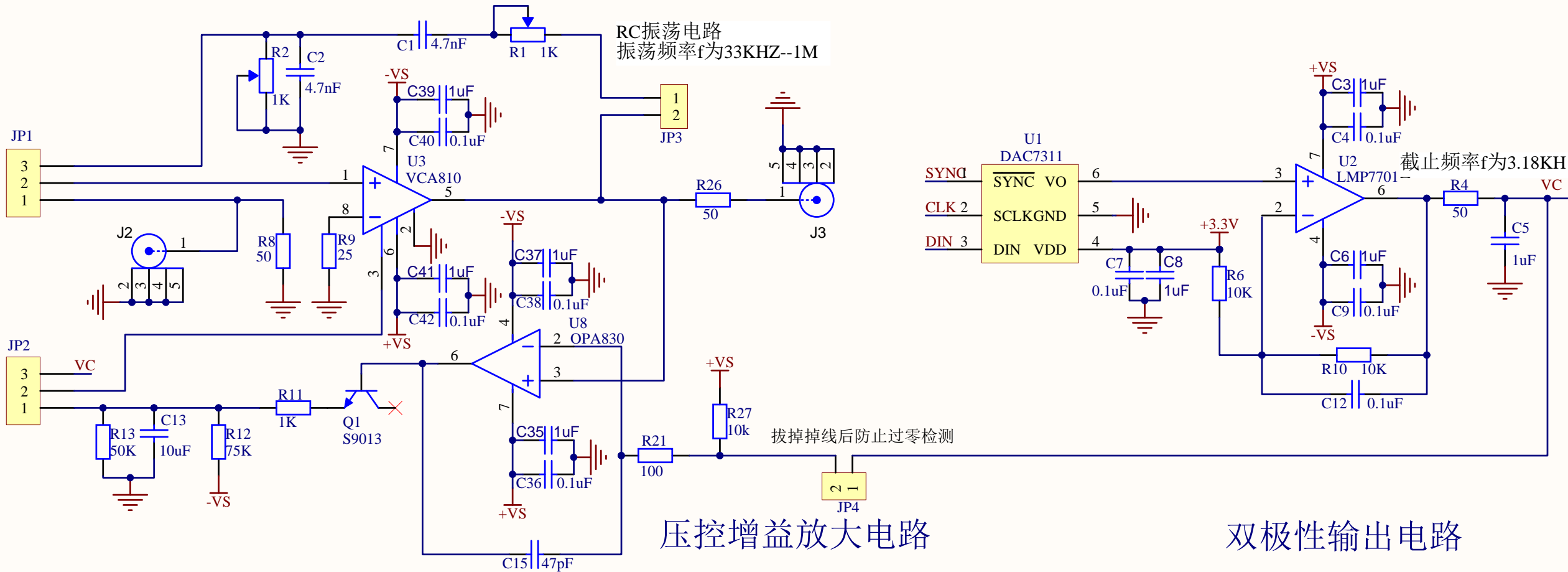
Designed for: PRJ_Customer Mod. Date: 2013/10/8 Project Title: PRJ_Title Assembly Variant: Variant name not interpreted Sheet: 1 of 1 File: MDAC-Tiva.SchDoc Size: A4 Contact: TechSupport



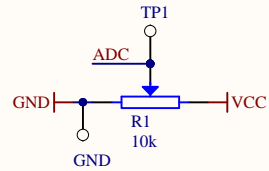
http://www.ti.com ?Texas Instruments CopyrightYear



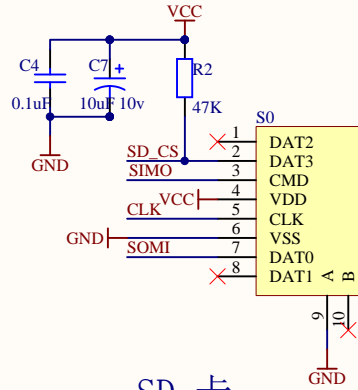
Title			Motor Driver & LED Driver	
Size	Number		Revision	
A4				
Date:	2013/12/16		Sheet of	
File:	E:\AllWork\...\MotroDriver-Tiva.schdoc		Drawn By:	Xu Bing Qiao



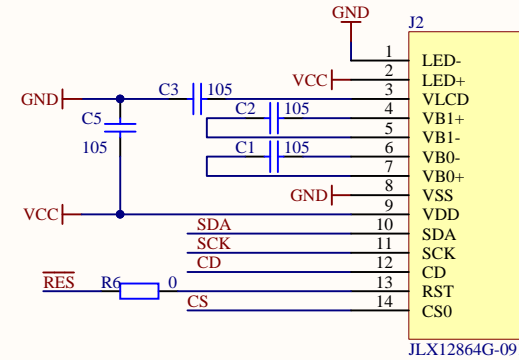
Title		
Size	Number	Revision
A4		
Date:	2013/12/16	Sheet of
File:	E:\AllWork\...\VCA810_Tiva.schdoc	Drawn By:



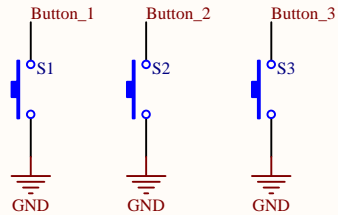
滚轮电阻



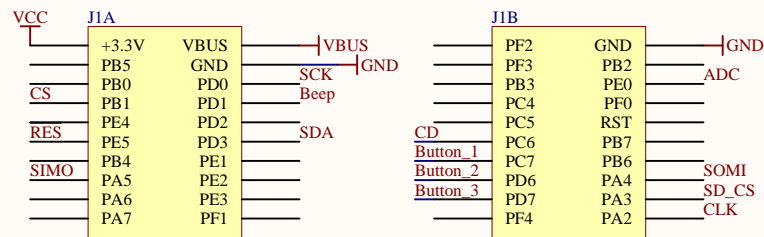
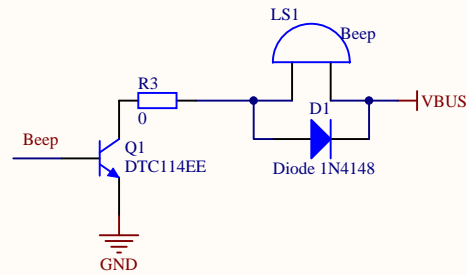
SD 卡



液晶显示模块



按键



BoosterPack

Title		
Size	Number	Revision
A4		
Date:	2013/12/16	Sheet of
File:	E:\AllWork\...\LCD-Tiva.SCHDOC	Drawn By: